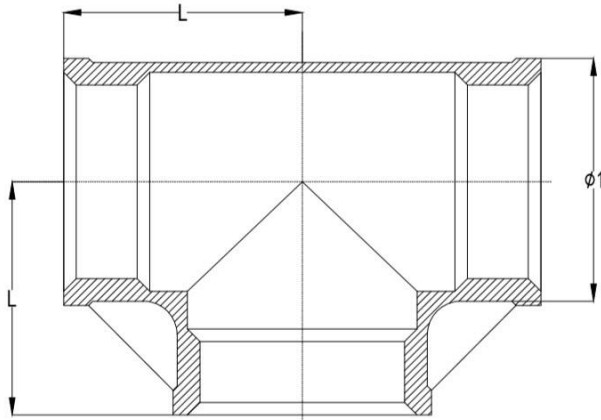


EQUAL TEE

316 STAINLESS 150LB



| SIZE | PRODUCT CODE | DIMENSIONS | | KG EACH |
|------|--------------|----------------|----|---------|
| | | Ø ¹ | L | |
| 1/8" | 6ET1/8A | - | - | |
| 1/4" | 6ET1/4A | 15 | 17 | 0.044 |
| 3/8" | 6ET3/8A | 18.6 | 22 | 0.048 |
| 1/2" | 6ET1/2A | 25 | 24 | 0.066 |
| 3/4" | 6ET3/4A | 30 | 30 | 0.095 |
| 1" | 6ET1A | 37 | 35 | 0.126 |
| 1 ¼" | 6ET11/4A | 46 | 41 | 0.230 |
| 1 ½" | 6ET11/2A | 52 | 44 | 0.329 |
| 2" | 6ET2A | 64 | 53 | 0.456 |
| 2 ½" | 6ET21/2A | 81 | 65 | 1.139 |
| 3" | 6ET3A | 95 | 75 | |
| 4" | 6ET4A | - | - | |

Our range of 150lb fittings are available as threaded BSP with socket weld end connections.

They are made from high quality investment castings to ISO4144 or above.

BSP threads are to ISO228-1 and 7-1

Made from 316 (CF8M) stainless steel

Sourced Components Ltd, Unit 33, Daish Way, Dodnor Industrial Estate,
Newport, Isle of Wight, PO30 5XJ
tel. 01983 559100 - sales@sourcedcomponents.co.uk



www.sourcedcomponents.co.uk